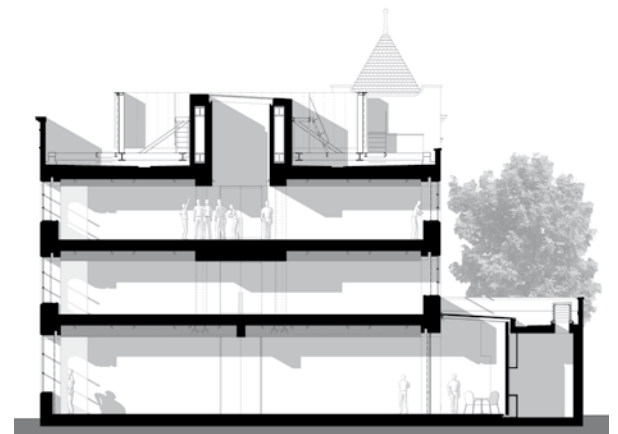
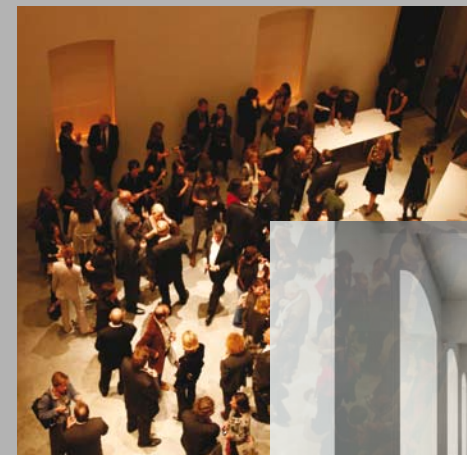


event / space



“Beneath the sparkling night-time glamour, the Institute is almost monastically simple...Smoothly finished and bathed in daylight”

The Guardian



LOUISE T BLOUIN INSTITUTE



Temple-like... an extremely flexible area...

The Financial Times

The Louise T Blouin Institute is the capital's newest and most innovative architectural space. The 35,000 sq ft 1920s coachworks in West London has been resculpted to offer 21st century exhibition space for emerging and established artists. The Institute also offers sleek and striking white spaces for all kinds of events.



Space

The London stock brick exterior with arched windows has been beautifully restored, while the interior has been stripped out creating an unexpected state-of-the-art white space with concrete floors.

Light

Façade: The Louise T Blouin Foundation commissioned legendary artist James Turrell to create a permanent site-specific artwork on the façade of the existing building. By day the gallery spaces are flooded with natural daylight, by night the windows are illuminated in a moving spectrum of colour which mark this out as a completely unique venue in London.

Daylight: The meeting rooms and event-specific spaces have precision architectural lighting, anti-glare and blackout blinds which offer beautifully daylight spaces or complete blackout.

Capacity

Total Area: 35,000 sq ft (3251.6 sq m)
Capacity: 800

Ground Floor

Capacity: 360+ depending on configuration
Triple Height Space Area: 315.2 sq ft (96.1 sq m)

Main Gallery

Area: 5,000 sq ft (464.5 sq m)

Café

Area: 288.4 sq ft (87.9 sq m)

Meeting Space Open

Area: 253.3 sq ft (77.2 sq m)

Meeting Space Closed

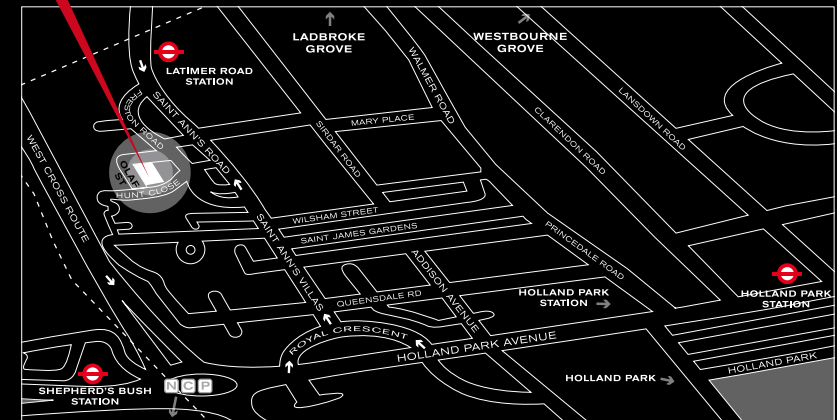
Area: (each part) 126 sq ft (38.4 sq m)

First and Second Floor

Area: 4,000 sq ft (371.6 sq m)

Capacity: 220 depending on configuration

our location



Louise T Blouin Institute

3 Olaf Street, Notting Hill, London W11 4BE

(near Latimer Road  and just off Freston Road)

T. +44 (0)20 7985 9600 F +44 (0)20 7985 9671

www.ltbfoundation.org